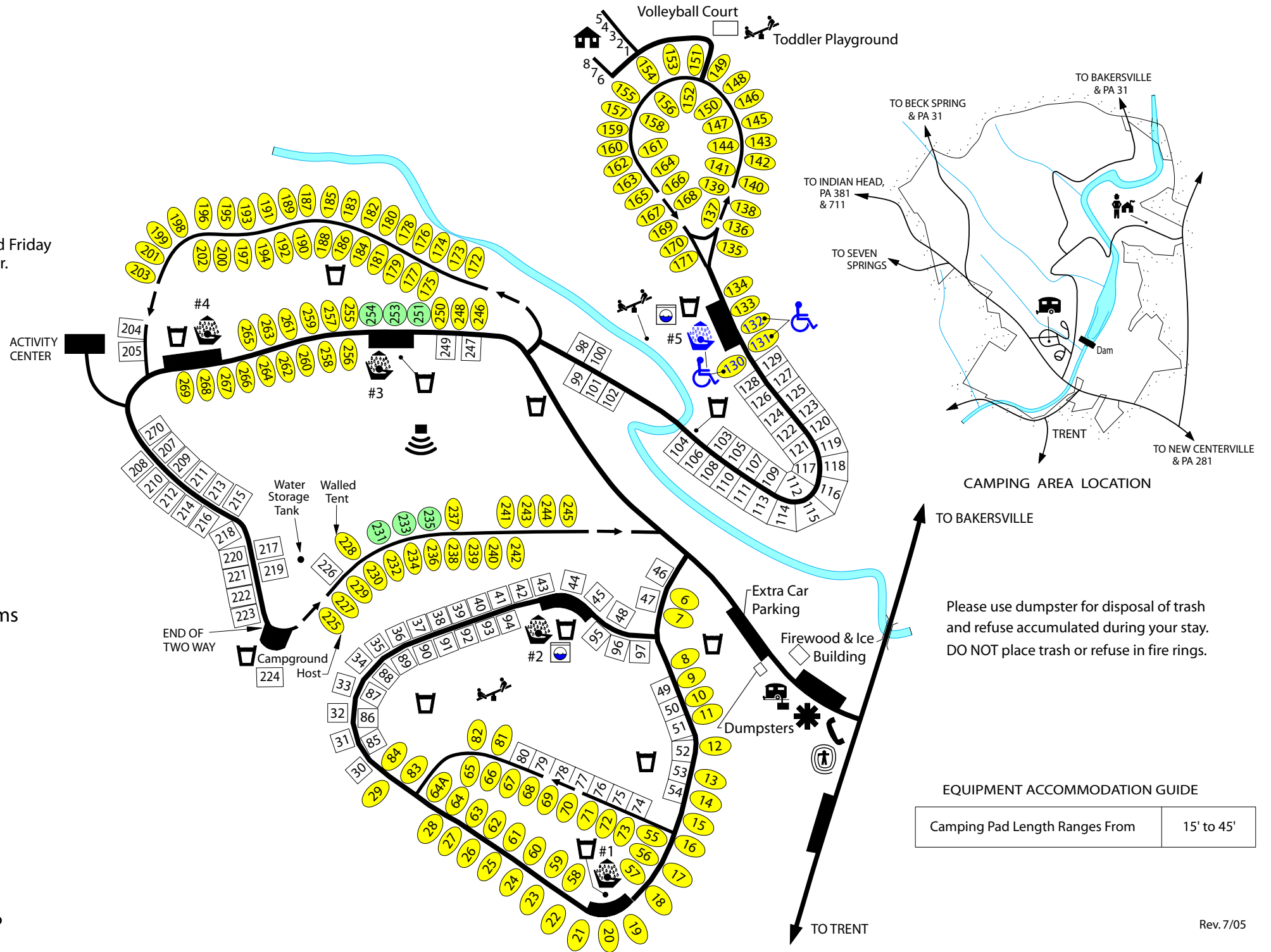


LAUREL HILL STATE PARK
 1454 Laurel Hill Park Rd.
 Somerset, PA 15501-8501
 Phone: 814-445-7725
 e-mail: laurellhillsp@state.pa.us

Make online reservations at
www.visitPAparks.com
 or call toll-free 888-PA-PARKS

Campground is open from the second Friday
 in April to the third Sunday in October.



LEGEND

- Park Office
- Contact Station
- Visitor Center
- Showerhouse/Restrooms
- Public Phone
- Camping Area
- Sanitary Dump Station
- Amphitheater
- Water
- Accessible
- Playground
- Camping Cottage
- Non-electric Site
- Washer & Dryer
- Electric Site-20 AMP
- Electric Site-30/50 AMP

CAMPING AREA LOCATION

Please use dumpster for disposal of trash
 and refuse accumulated during your stay.
DO NOT place trash or refuse in fire rings.

EQUIPMENT ACCOMMODATION GUIDE

Camping Pad Length Ranges From	15' to 45'
--------------------------------	------------

Laurel Hill State Park

The modern campground has 264 tent or trailer sites (149 with electric) with flush toilets, hot water showers, sanitary dumping stations and drinking water.

Eight camping cottages near the campground sleep five people in single bunks and double/single bunks, and have wooden floors, windows, porch, picnic table, fire ring and electric lights and outlets. One walled tent is available for rent. The tent sleeps six people and has a refrigerator, bunk beds with mattresses and electricity.

No Pets

Pets are prohibited in swimming areas and all overnight areas. Guide dogs or other dogs that assist people with disabilities and are controlled by the use of a harness or other restraint are not considered "pets."

For information on campgrounds that allow pets on specific sites, contact the park office or call toll-free, 888-PA-PARKS, Monday to Saturday, 7 a.m. to 5 p.m. except state holidays.

Camping Season

This campground opens in April and closes in October.

Reserving a Site

Most campsites in Pennsylvania state parks can be reserved 11 months in advance to noon of the day of arrival. If you do not have a reservation and arrive after noon, check at the contact station or near the campground entrance for instructions.

Reservations can be made using MasterCard, VISA, American Express and Discover credit cards or personal, traveler's and cashier's checks. To confirm the reservation, full payment must be received within two weeks of making the reservation.

To reserve a campsite, visit www.visitPAparks.com, or call 888-PA-PARKS, Monday to Saturday, 7 a.m. to 5 p.m. except state holidays. The phone number is staffed on Memorial Day, July 4 and Labor Day.

Campsite Issuing

Advance reservations are available for almost all campsites. Unreserved sites are available on a first-come, first-served basis. If an employee is not available, read posted instructions and check the "After Hours Posting Report" then proceed to an available site and set up.

The appropriate fee must be paid to a park

employee or deposited in a supplied honor system envelope before setting up on a campsite.

Cancellations and Transfers

Changes to an online reservation must be made by calling the Pennsylvania State Parks Reservation Center at 888-PA-PARKS, Monday through Saturday, 7 a.m. to 5 p.m. Eastern Time.

Cancellations can be handled via the Internet under "My Account" or by calling the call center. Cancellations made up to the close of business seven days prior to your scheduled arrival date will incur a \$10 cancellation fee. If you cancel six days or less prior to the arrival date, you will forfeit the first night's fee or \$75, whichever is the lesser amount. There is a \$10 fee assessed for all changes made to your reservation, except adding nights to the reservation. Changes to a reservation can be made at the call center, but not via the Internet. Any cancellation or change on the day of arrival must be made through the state park that you have the reservation with.

Access for People with Disabilities

If you need an accommodation to participate in park activities due to a disability, please contact the Pennsylvania Bureau of State Parks: 888-PA-PARKS (voice) 888-537-7294 (TTY) 711 (AT&T Relay Services)

Protect and Preserve Our Campgrounds

Please familiarize yourself and your camping party with the following rules and regulations.

Maximum Camping Period

Campers may stay in state park campgrounds for up to 14 consecutive nights from Memorial Day to Labor Day. Campers may camp for 21 consecutive nights during the remainder of the year.

Maximum Number of People Per Site

Site occupancy is limited to one family unit (persons living under one household) or one non-family unit limited to five persons per site. Anyone renting a campsite must be 18 years of age or older and must be present at the campsite.

Motor Vehicles

Only one car per campsite is allowed unless otherwise posted. Park only in designated areas.

Alcohol

Alcoholic beverages are prohibited in all Pennsylvania state parks.

Check-in/Check-out Time

Check-in time is 3 p.m. on the first day of the rental period. Check-out time is 3 p.m. on the final day. Camping cottages must be vacated by 10 a.m.

Visitors, Quiet Hours and Noise

Visitors are welcome to your campsite from 8 a.m. to 10 p.m. Campers must not disturb the sleep of others between 9 p.m. and 8 a.m. Electric generators that create excessive noise are prohibited.

Fires

Fires are permitted only in provided fireplaces or grills. Gas and propane camp stoves are permitted. Please be careful with fire. Fires must be attended at all times and extinguished before leaving your campsite.

Firewood

Firewood is not provided. Cutting live trees or standing trees and the operation of chainsaws are prohibited.

Firewood Advisory

Firewood may contain non-native insects and plant diseases. Bringing firewood into the park from other areas may accidentally spread pest insects and diseases that threaten park resources and the health of our forests. Even if you are not within a quarantine area, using local firewood is best. Do not take wood home with you and do not leave firewood - Burn It!

Handwashing

Handwashing and dishwashing are permitted only where appropriate facilities are available. Handwashing and dishwashing are prohibited at water spigots, hand pumps, springs, lakes and streams.

Hunting

Firearms and archery equipment may be uncased and ready for use only in authorized hunting areas during hunting seasons. In areas not open to hunting or during non-hunting seasons, firearms and archery equipment must be kept in the owner's car, trailer or camp.

Commonwealth of Pennsylvania
Edward G. Rendell, *Governor*
Department of Conservation and Natural Resources
Michael DiBerardinis, *Secretary*



Laurel Hill State Park



Modern Camping



Laurel Hill State Park

1454 Laurel Hill Park Road
Somerset, PA 15501-5629
814-445-7725

e-mail: laurellhillsp@state.pa.us
www.visitPAparks.com